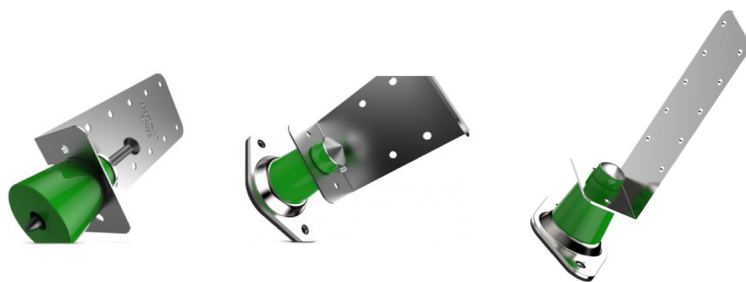


dBA WD



The dBA WD is a anti-vibration wall decoupler. It is used to fix a wall structure to a previously existing wall, preventing the creation of acoustic bridges between the two of them. The Brick versions have a single fixing point which provides the needed stability together with a fast, very simple and less invasive installation. The Wood versions come with two fixing points which grant a stable connection, even in hostile surface structures. The WD series provide solutions for different wall constructions, gap dimensions and fixation requirements.

Purpose

To be applied in walls

Performance



General Specifications:

- dBA WD-Brick 1.5
- dBA WD-Brick 0.8 (easily bent by hand)
- dBA WD-Wood 1.5
- dBA WD-Wood 0.8 (easily bent by hand)

PRODUCT COMPOSITION:

- dBA WD
- Steel Frame with Elastomeric Compound (Green Megol)

TECHNICAL INFORMATION:

- Fire Rate: UNE 37-507-88
- Maximum Load per Support [kg]: | 30

Dimensions:

- 120x50x0,8mm* / 1,5mm**

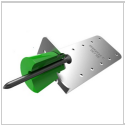
* 1,5 mm piece for wider air gaps and less deflection.

** 0,8 mm easily hand bendable.

Dimensions Weight

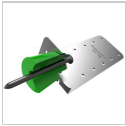
Box
Quantity per box: 50
Dimensions: 220x160x370mm
Volume: 0.013m3
Weight: Kg

dBA WD



dBA WD-Brick 0.8

Retail code:
0030107004



dBA WD-Brick 1.5

Retail code:
0030107003



dBA WD-Wood 1.5

Retail code:
0030107001



dBA WD-Wood 0.8

Retail code:
0030107002